

40. prvenstvo Kapele

Zagreb – Kupinečki Kraljevec, April 26th – 27th 2025

BULLETIN

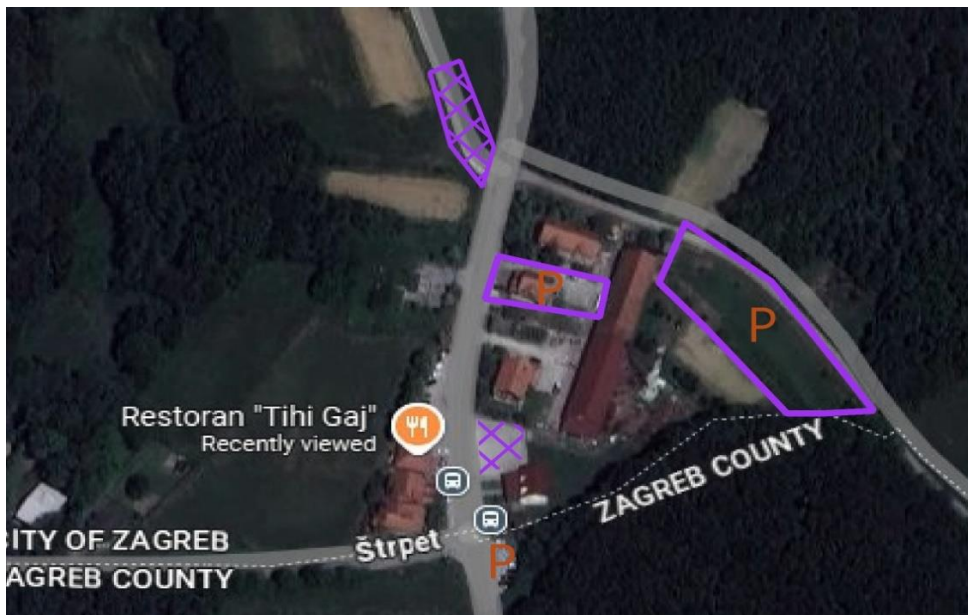
Event center: Kupinečki Kraljevec, Kraljevečki brijegi 180, restaurant Tihi gaj.

Location: GPS 45.656772557153964, 15.870739731410069

Parking: Parking is provided on the private property. The organizer will direct you to the parking place. Please follow the organizer's instructions upon arrival!

Please do not park on the access road to the family houses northwest of the restaurant, nor opposite the restaurant. Also, competitors should not use the restaurant's parking on Sunday due to a private event taking place in the restaurant.

Parking area:



Maps:

E 1: Crnjakovo, scale **1:10000** for categories MW12, 14, 16, 20, 21A, 21B, 35, OPEN, scale **1:7500** for categories MW45, 55, 65, 70

E 2: Bratina, scale **1:10000** for categories MW12, 14, 16, 20, 21A, 21B, 35, OPEN, scale **1:7500** for categories MW45, 55, 65, 70

Maps are printed on the water resistant pretex paper 50.120.

On Sunday, categories MW45, 55, 65 and 70 have maps printed on the A3 paper format and all the other categories have maps printed on the A4 paper format.

Punching system: SPORTident Air+

AIR+ test control will be at the start area.

Control descriptions are printed on the maps and the additional control descriptions will be available in the first start corridor.

Distance to the start: **E 1** - 500 m

E 2 - 250 m

The route to the start is marked with white and blue ribbons. Warm up is allowed in the event center and on the route to the start.

The route from the finish control to the event center is marked with red ribbons.

The route to the start on both days of the competition, as well as the route from the finish control to the event center, will be on the road. Traffic is light, but please be careful!

Distance from the finish control to the event center:

E 1 – 560 m

E 2 – 1500 m

After the start signal, going through the "start point" is mandatory.

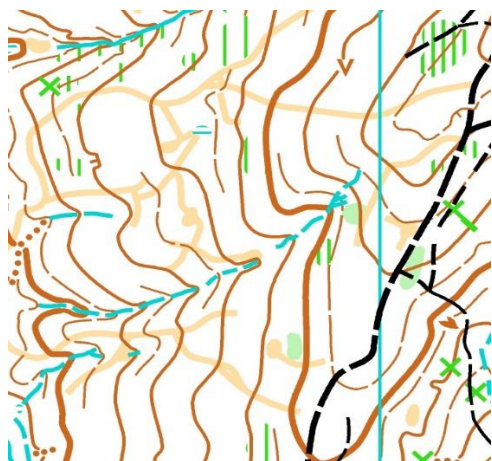


Symbol 115 (IOF ISOM) on the map represents a plateau or fox holes.

On the map of Bratina, there are old paths created from the extraction of wood. These paths are visible from a specific direction, while very often when passing across them, they are not noticeable at all.

The photographs below show these paths, and the map fragment represents how these paths are drawn on the map.





Refreshment will be available at the finish area on both days.

On the second day of the competition, the refreshment will be provided on the courses for categories with a predicted winning time of 60 minutes or more.

After finishing the race, please leave your map in the box at the finish area. Maps will be available after the start of the last competitor.

Prize giving ceremony will be held for each day separately.

E 1 - is planned for 3:00 PM or earlier if conditions allow.

E 2 - is planned for 4:00 PM or earlier if conditions allow.

The portable toilets will be set up in the event center.

During the competition, it is not allowed to go to the competition terrain to take photographs. Photographing is possible at the finish control.

Each competitor participates at his/her own risk.

Clubs are responsible for ensuring that each competitor has a valid medical certificate from a doctor.



During the competition, medical assistance (a doctor and a technician) will be available in the event center.

By registering and participating in the competition, all competitors agree to be audio and visually recorded for the purposes of promoting the competition and the organizer's club.

Please, dispose the waste in the designated containers.

Course lengths:

40. prvenstvo Kapele - 1. day

M21A	4,3 km	215 m	17 KT
W21A	3,5 km	170 m	13 KT
M12	2,0 km	70 m	7 KT
M14	2,2 km	120 m	8 KT
M16	3,1 km	195 m	11 KT
M20	3,5 km	170 m	12 KT
M21B	3,0 km	170 m	10 KT
M35	3,5 km	170 m	12 KT
M45	3,1 km	195 m	11 KT
M55	3,0 km	170 m	9 KT
M65	2,7 km	120 m	10 KT
M70	2,3 km	125 m	8 KT
W12	2,0 km	70 m	7 KT
W14	2,2 km	120 m	8 KT
W16	3,0 km	170 m	10 KT
W20	3,1 km	195 m	11 KT
W21B	2,7 km	120 m	10 KT
W35	3,1 km	195 m	11 KT
W45	3,0 km	170 m	10 KT
W55	2,7 km	120 m	10 KT
W65	2,3 km	125 m	8 KT
W70	2,2 km	120 m	8 KT
OPEN	2,2 km	120 m	8 KT

Croatian long distance championship – 2. day

M21A	13,1 km	580 m	25 KT
W21A	8,8 km	400 m	16 KT
M12	2,1 km	50 m	7 KT
M14	3,0 km	90 m	9 KT
M16	5,3 km	210 m	11 KT
M20	6,9 km	300 m	15 KT
M21B	5,0 km	200 m	11 KT
M35	8,8 km	400 m	16 KT
M45	6,9 km	300 m	15 KT
M55	6,0 km	275 m	10 KT
M65	3,7 km	150 m	11 KT
M70	3,4 km	120 m	10 KT
W12	2,1 km	50 m	7 KT
W14	3,0 km	90 m	9 KT
W16	5,1 km	190 m	10 KT
W20	6,0 km	275 m	10 KT
W21B	3,7 km	150 m	11 KT
W35	6,0 km	275 m	10 KT
W45	5,3 km	210 m	11 KT
W55	3,7 km	150 m	11 KT
W65	3,4 km	120 m	10 KT
W70	2,7 km	100 m	7 KT
OPEN	3,1 km	90 m	10 KT